



COBA, S.A.
COBA, LTDA.



**APRESENTAÇÃO DOS
RESULTADOS DA APLICAÇÃO DO
SISTEMA DE CLASSIFICAÇÃO ÀS
BARRAGENS DA ANA**

17 DE JULHO, 2013



COBA, S.A.
COBA, LTDA.



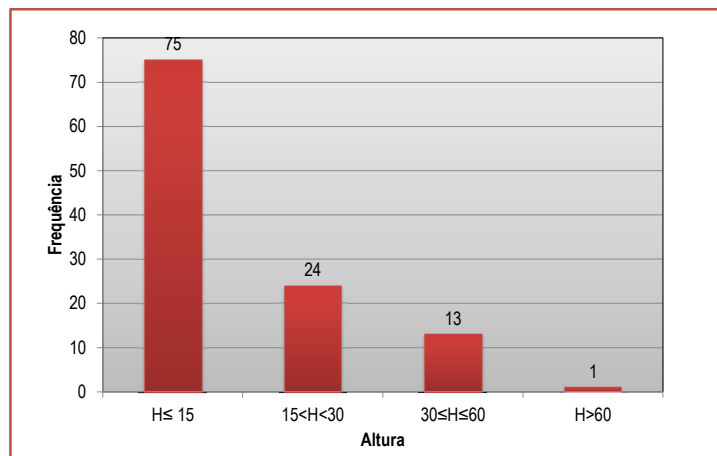
> ÍNDICE

- > *Características Técnicas*
- > *Estado de Conservação*
- > *Plano de Segurança*
- > *Categoria de Risco*
- > *Categoria de Dano Potencial Associado*
- > *Classes de Barragens*

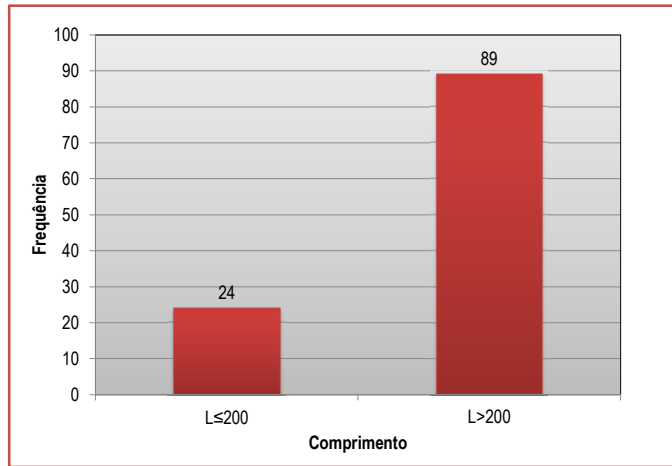
CARACTERÍSTICAS TÉCNICAS



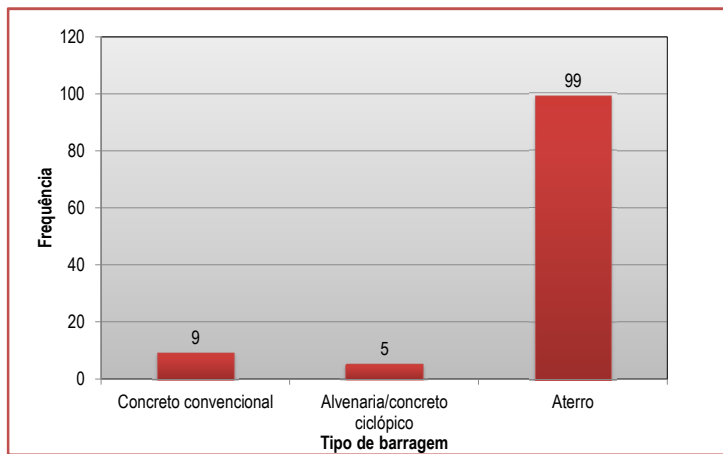
LABORATÓRIO NACIONAL
DE ENGENHARIA CIVIL



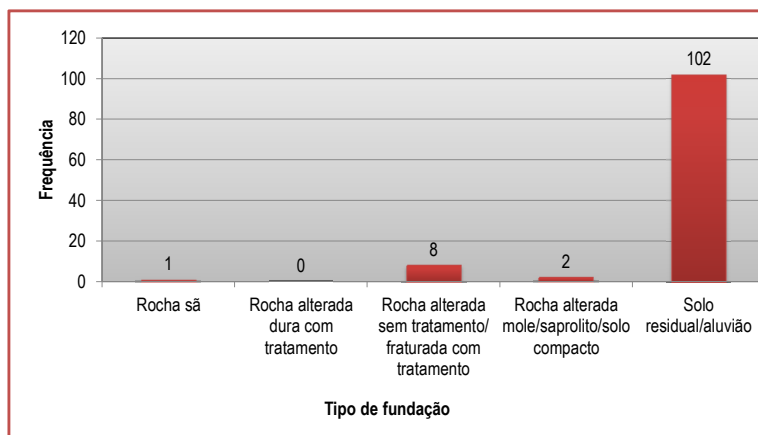
LABORATÓRIO NACIONAL
DE ENGENHARIA CIVIL



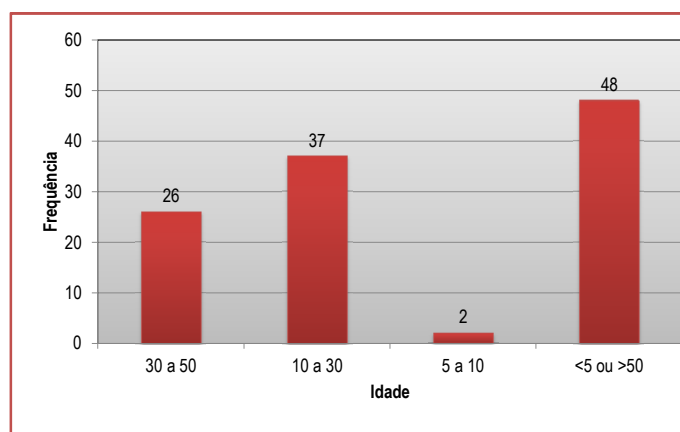
LABORATÓRIO NACIONAL
DE ENGENHARIA CIVIL



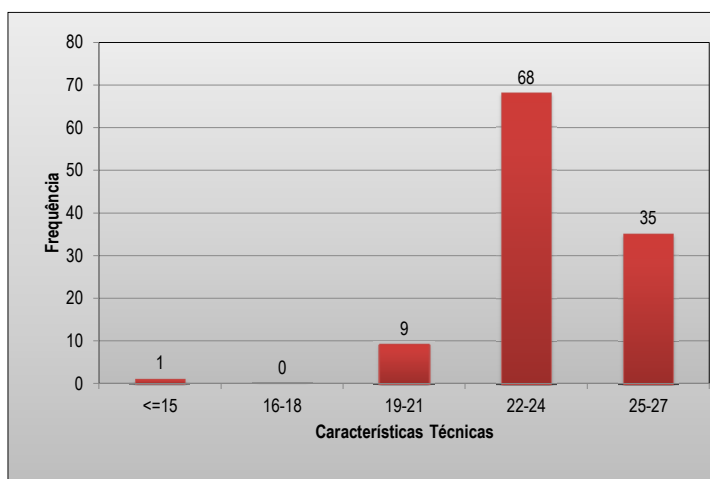
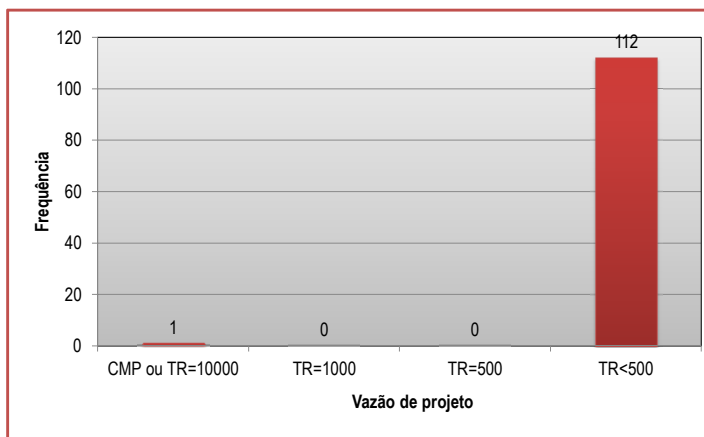
LABORATÓRIO NACIONAL
DE ENGENHARIA CIVIL



LABORATÓRIO NACIONAL DE ENGENHARIA CIVIL



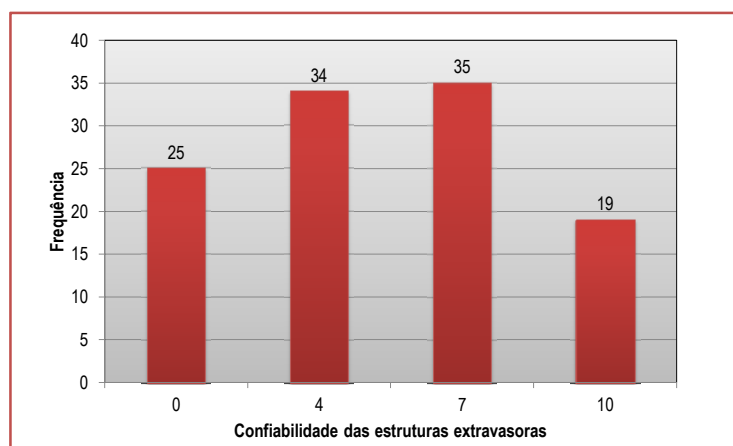
LABORATÓRIO NACIONAL DE ENGENHARIA CIVIL



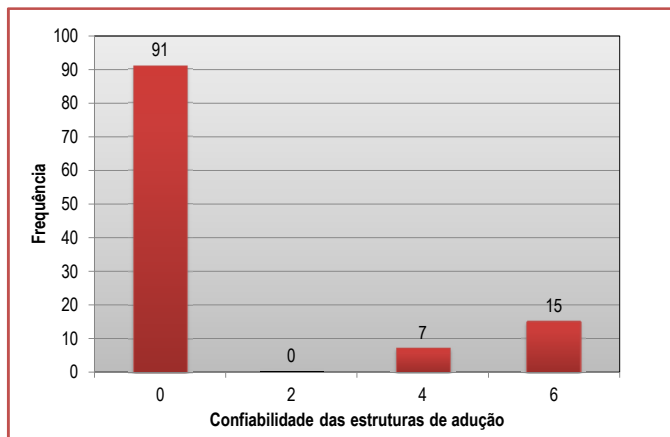
ESTADO DE CONSERVAÇÃO



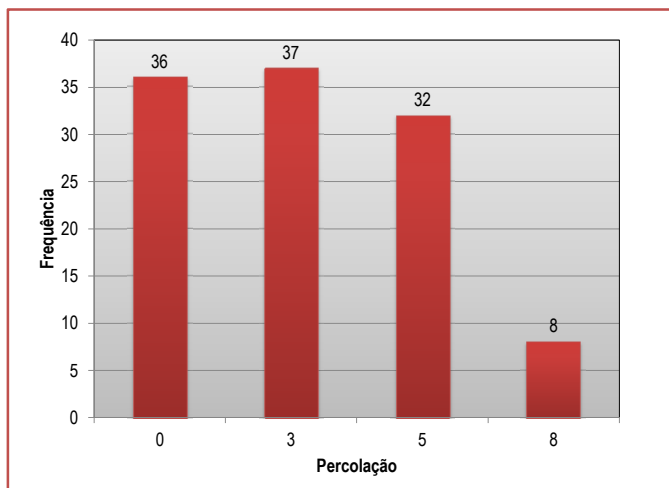
LABORATÓRIO NACIONAL
DE ENGENHARIA CIVIL



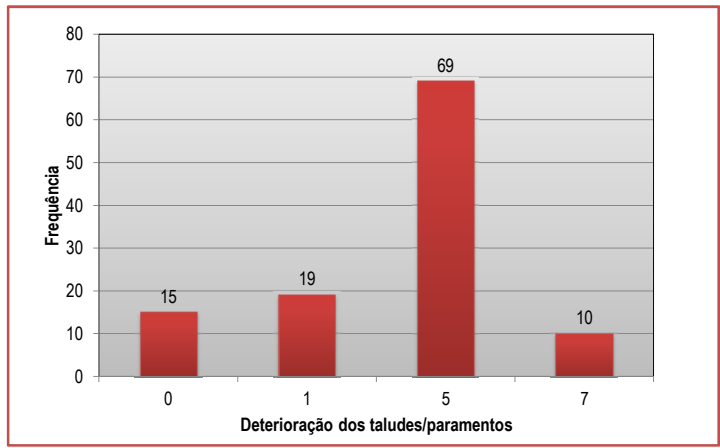
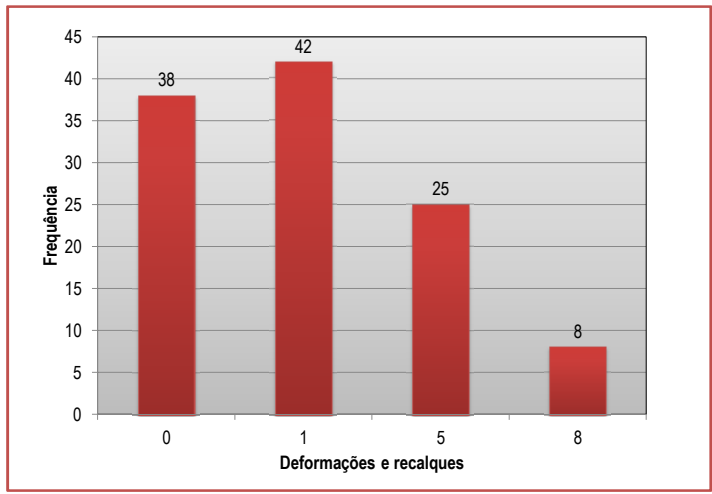
LABORATÓRIO NACIONAL
DE ENGENHARIA CIVIL

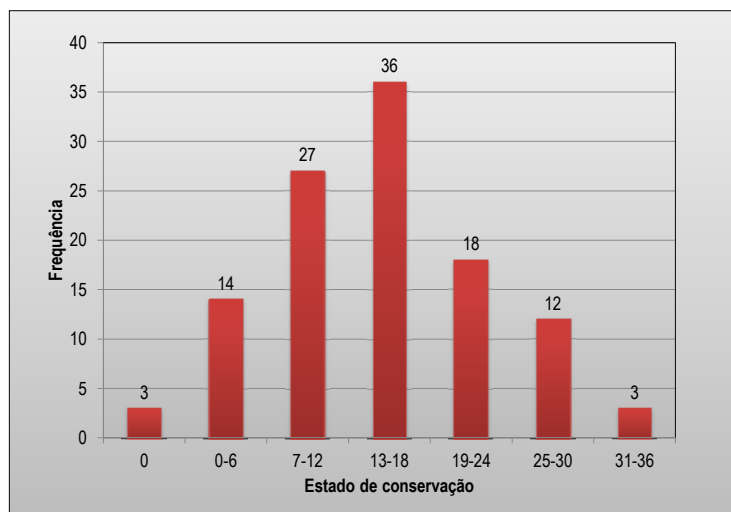
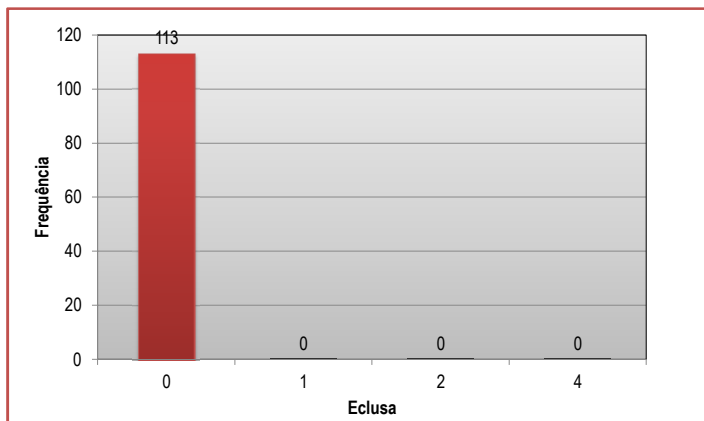


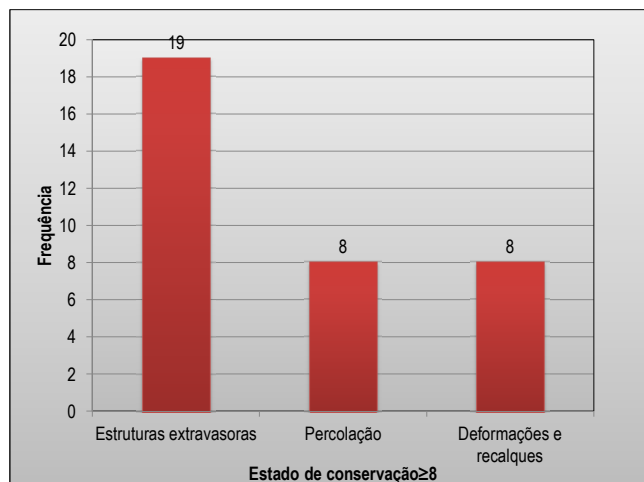
LABORATÓRIO NACIONAL DE ENGENHARIA CIVIL



LABORATÓRIO NACIONAL DE ENGENHARIA CIVIL

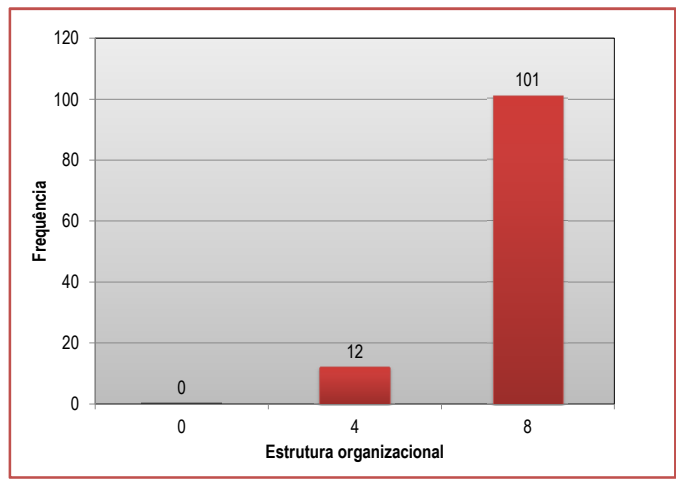
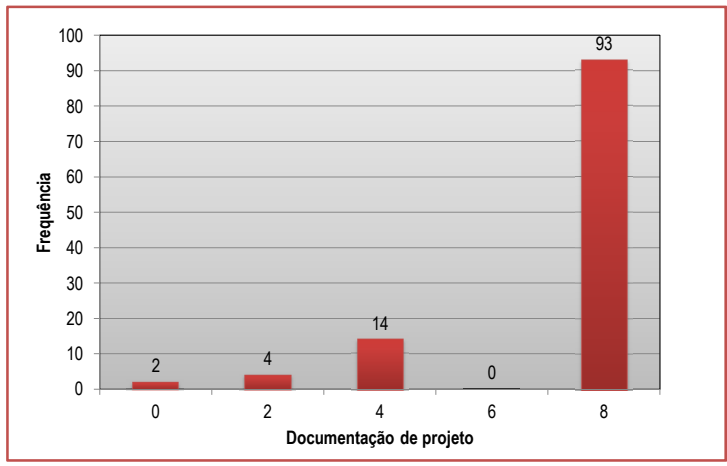


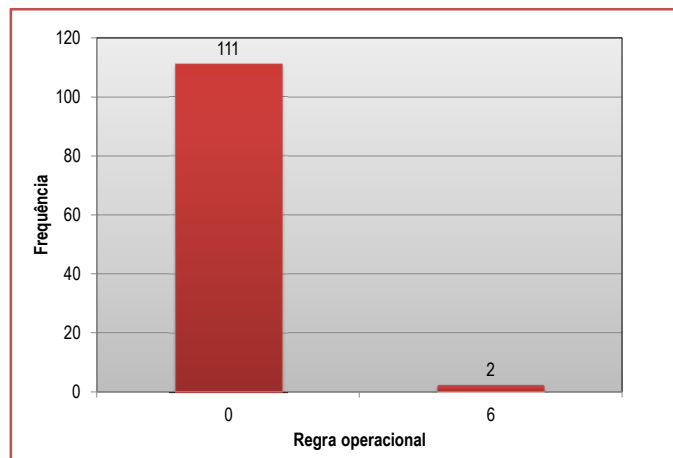
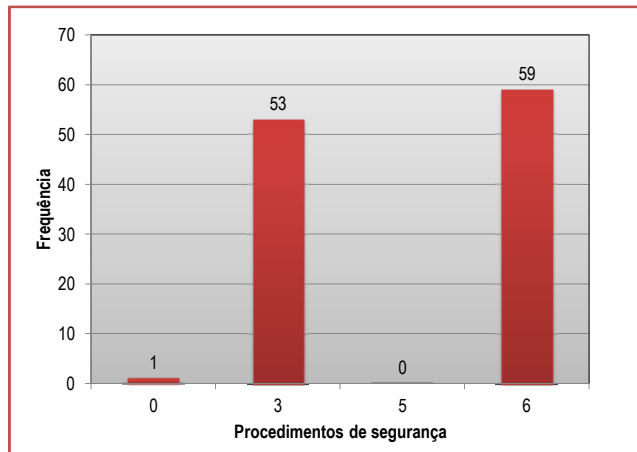


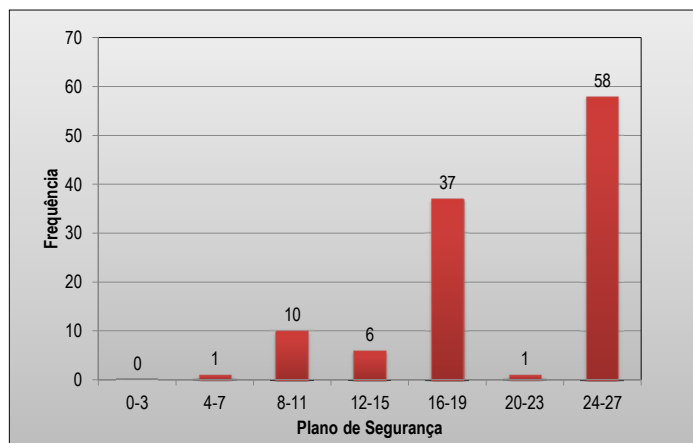
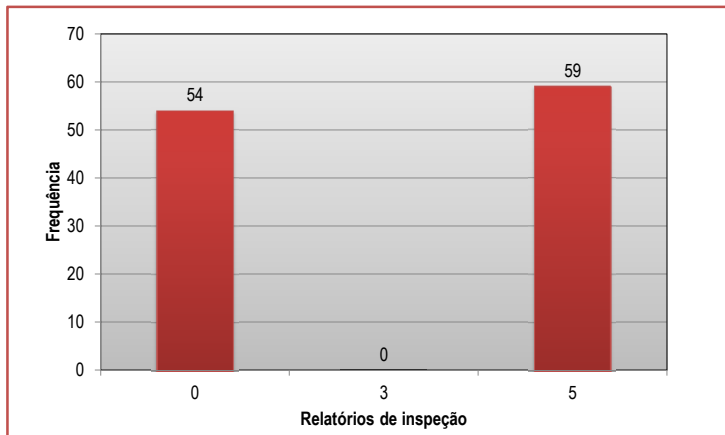


PLANO DE SEGURANÇA





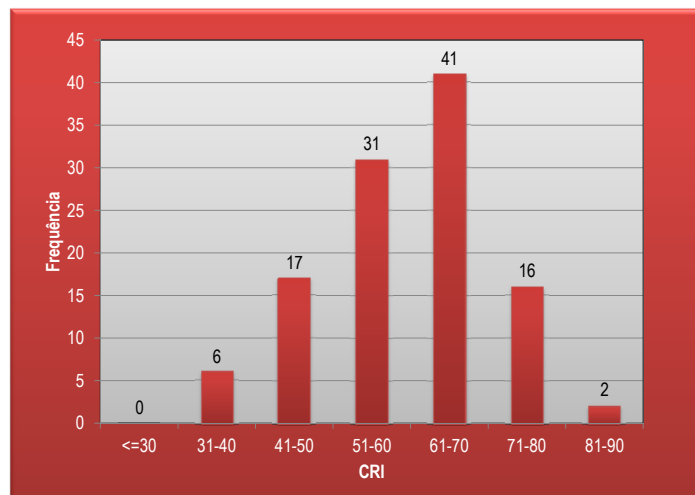




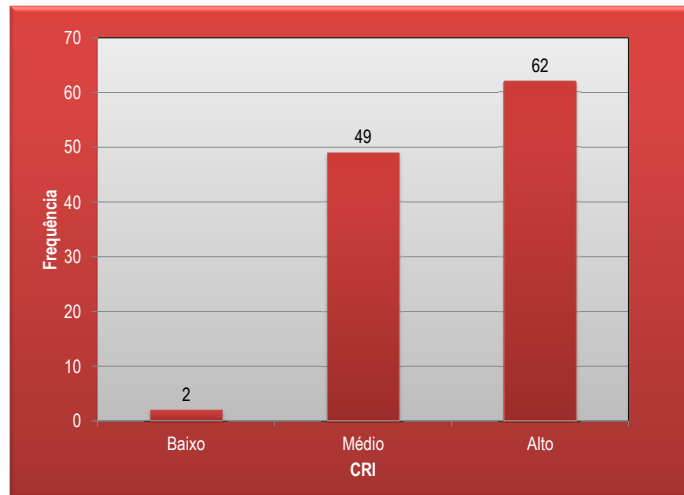
CATEGORIA DE RISCO



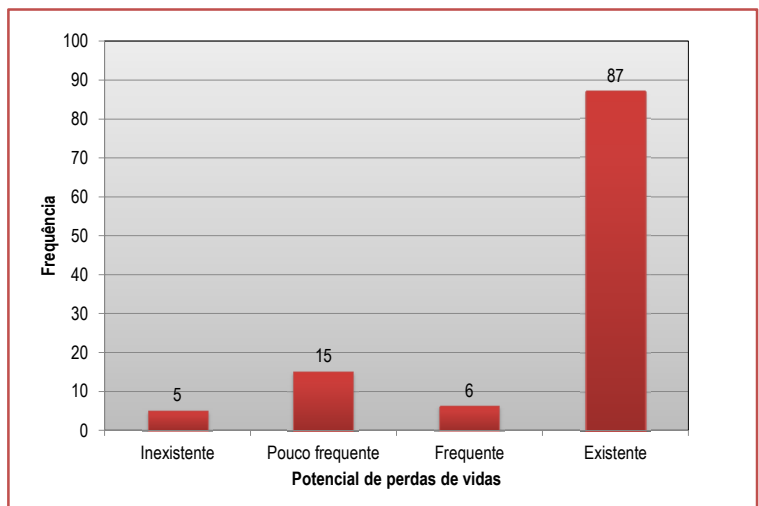
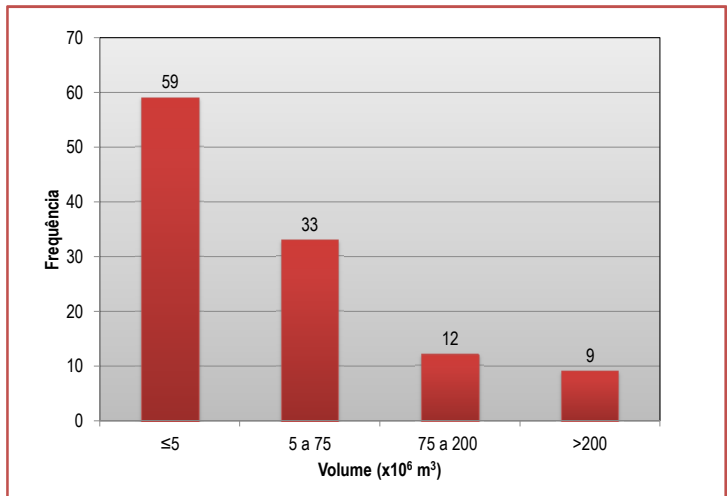
LABORATÓRIO NACIONAL
DE ENGENHARIA CIVIL

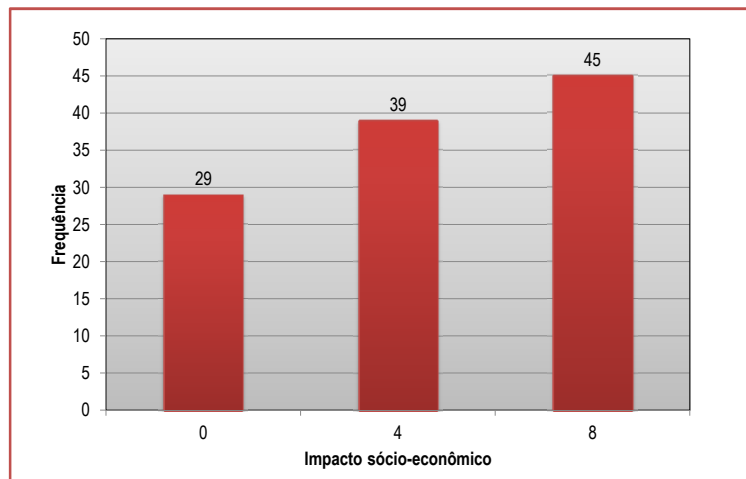
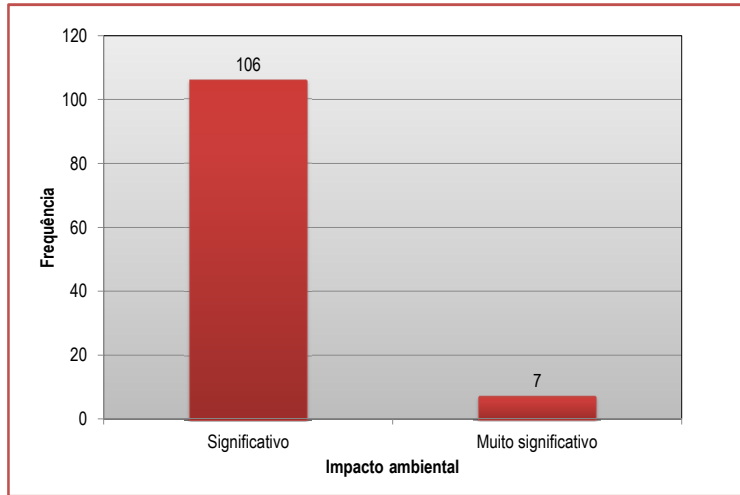


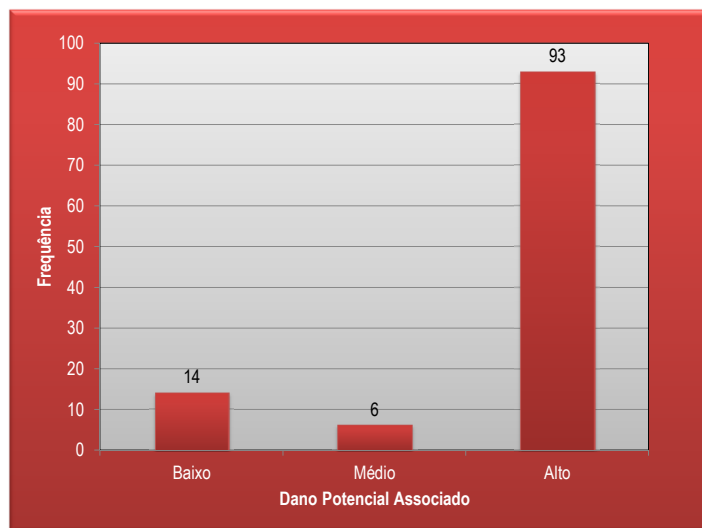
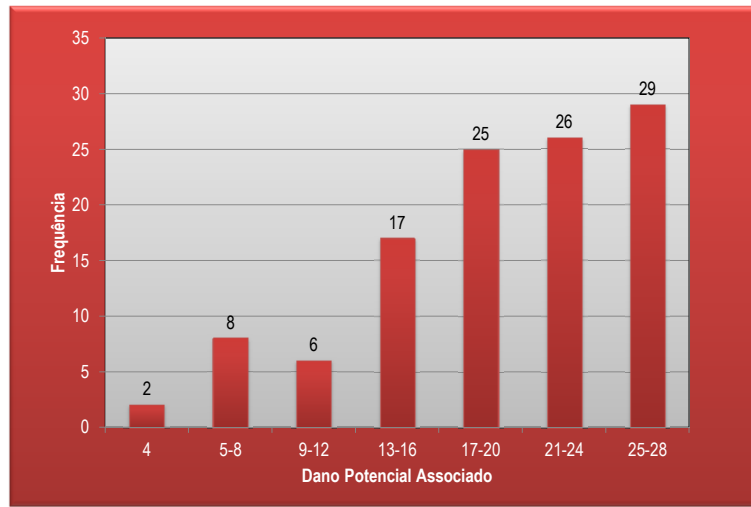
LABORATÓRIO NACIONAL
DE ENGENHARIA CIVIL



DANO POTENCIAL ASSOCIADO







CLASSES DAS BARRAGENS

Res. 91/2012-ANA

